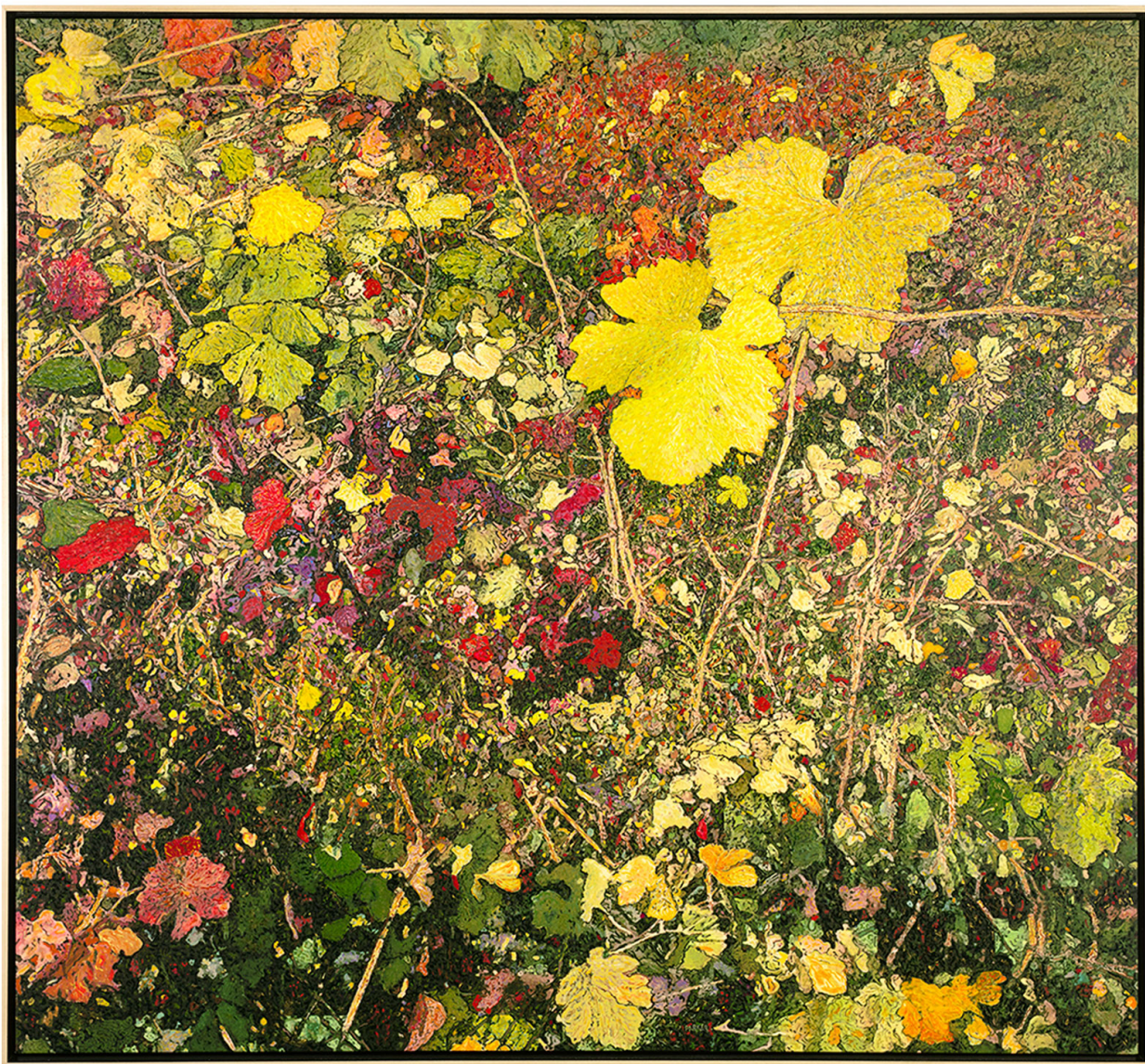


Catalogue of Available Artworks

**Updated
December, 2021**

*In most cases, more detailed photographs are available if
requested*

*Fred R. Parker
Parker Fine Art
8467 Sonoma Highway
Kenwood, CA 95452
(707) 833-2602
fred@parkerfineart.com
www.parkerfineart.com*



#156 Red Vines II, 2021
acrylic on canvas with shadow frame
49 x 52 inches
\$10,000



#157 *Red Vines III*, 2021

acrylic on canvas

9 x 14.5 image and metal frame

\$450



#158 *Red Vines III*, 2021

giclée print

13.5 x 22 image

17 x 25 sheet

\$250

22 x 30 mat and wooden frame

\$450



#159



#160



#161



#162

Vineyard Studies 2021

***acrylic on canvas
mounted to
foamcore sheets***

***10 x 10 inches
each***

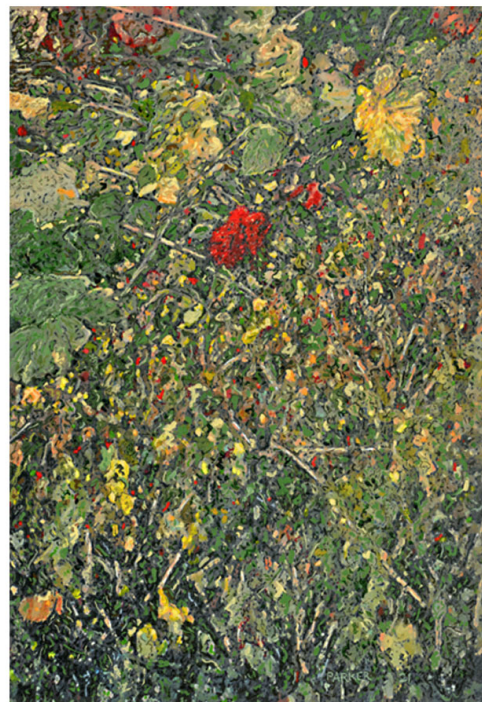
with metal frames

\$350 each

#163 Vineyard Ten, 2021

***acrylic on canvas
mounted to foamcore
with
16 x 11 metal frame***

\$500





#164

Red Vines IV, 2021

acrylic on canvas

42 x 31 inches

stretched over wooden panel

floats off wall one inch

\$5,000



#1 Sonoma Valley Oak Tree, 2020

acrylic on giclée print on canvas

mounted to foam core

10.75 x 13.25 image

11.5 x 14 shadow frame

\$600



#2 Sonoma Clouds 2018

acrylic on gessoed masonite

20 x 60 no frame / floats off wall one inch

\$4,500



#3 *Sugarloaf Vineyard, 2017*

pastel on unique print

14 x 33 image

23 x 41.5 double mat and frame

\$2,000



#4 *Sugarloaf Vineyard, 2007*

acrylic on canvas with shadow frame

27 x 61 image and frame

\$10,000



#5 Looking Down on Sonoma Valley, 2019
 acrylic on giclée print
 5.5 x 18 image
 10 x 23 double mat and frame
 \$500



#6 Hood Mountain, 2008
 acrylic and pastel on unique giclée
 13 x 51 image
 23 x 61 double mat and frame
 \$3,000



#7 *Sugarloaf Mountain, 2010*
 acrylic on canvas with shadow frame
 27 x 49 image and frame
 \$6,000



#8 *Hood Mountain, 2010*
 acrylic on canvas with shadow frame
 27 x 49 image and frame
 \$6,000



#9 Sugarloaf Mountain, 2020
giclée print
 13.5 x 24 image
 15 x 26 sheet
 \$250



#10 Hood Mountain, 2020
giclée print
 13.5 x 24 image
 15 x 26 sheet
 \$250



#11 Sugarloaf Mountain, 2007
pastel on giclée
18.5 x 33 image
28 x 43 double mat and frame
\$2,500



#12 Sugarloaf Mountain, 2007
giclée print
18.5 x 33 image
24 x 35 sheet
\$400



#13 Kenwood Gold, 2007
pastel on giclée print
 18 x 33 image
 28 x 43 double mat and frame
 \$2,500



#14 Kenwood Gold, 2020
giclée print
 13.5 x 24 image
 16.5 x 27 sheet
 \$250



#15 Looking Down on Sonoma Valley, 2020

giclée print

13.5 x 24 image

16.5 x 27 sheet

\$250



#16 Looking Up from Kenwood Marsh, 2016

giclée print

13.5 x 24 image

16.5 x 27 sheet

\$250



#17 Sugarloaf Mountain, 2008

giclée print

13.5 x 16 image

16 x 19 sheet

\$250

? x ? mat and frame

\$400



#18 Hood Mountain, 2020

giclée print

13.5 x 24 image

16.5 x 27 sheet

\$250

20 x 29.5 double mat and metal frame

\$350



#19 Wild Cat Ridge, 1996
*pastel and acrylic on
 multimedia art board
 24 x 24 image and frame
 \$500*



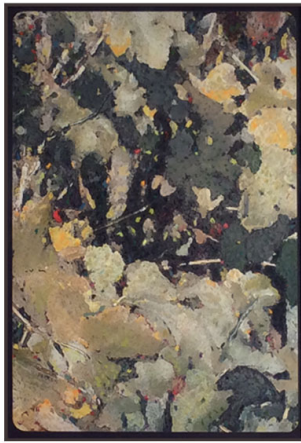
#20 Passing Clouds, 2018
*acrylic on canvas with
 shadow frame
 21 x 45 image and frame
 \$5,000*



#21 Vineyard Study #10, 2015
*acrylic on canvas stretched
 over custom panel with
 rounded edges and corners
 that floats off the wall
 without a frame.*
 48 x 31 image
 \$6,000

#22 Carneros Windmill, 2003
oil on multimedia art board
 29.5 x 28.5 image
 34 x 33 frame
 \$1,200





#23



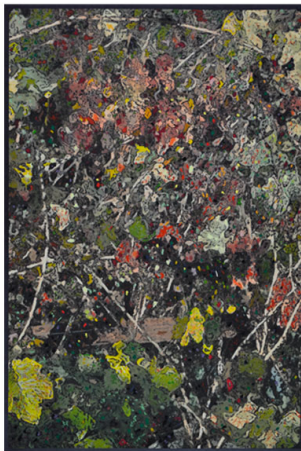
#24



#25



#26



#27



#28



#29



#30

Vineyard Studies, 2015

acrylic and pastel on giclée prints

18.5 x 12.5 each image in black metal frames

\$250 each

#31 Vineyard Studies Boxed Portfolio

ten 11 x 8 giclée prints

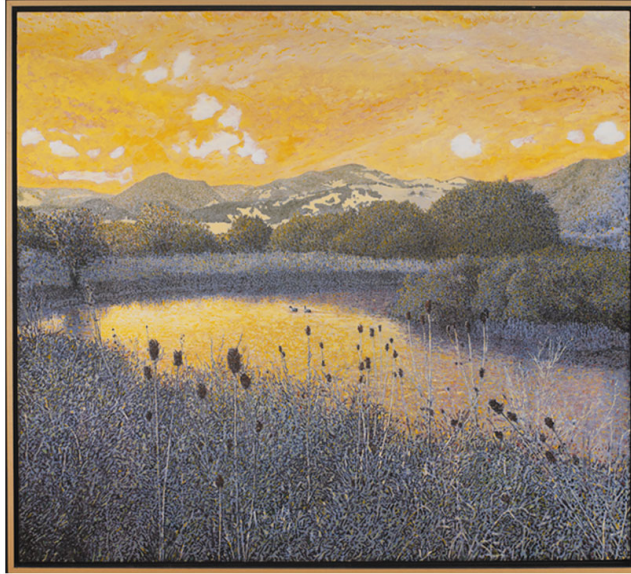
and title page in

clamshell 12.5 x 9.5 x 1

archival storage box

\$600





#32 Kenwood Marsh #4, 2005
oil on canvas with shadow frame
29 x 32 image and frame
\$3,500



#33 Kenwood Marsh, 2018
giclée print mounted to
foam core with black frame
27 x 30.5 image
30 x 33 frame
\$900



#34 Carneros Vineyard, 2000
oil on canvas over panel
with shadow frame
38 x 46 image & frame
\$3,500



#35 Ukiah, 2015
pastel and acrylic on giclée
11 x 13 image
18.5 x 20 double mat and frame
\$450



#36 Haywood Vineyards, 2001
oil on canvas over panel
 23 x 31 image & frame
 \$1,200



#37 Haywood Vineyards, 2001
oil on canvas over panel
 23 x 46 image & frame
 \$2,500



#38 Sonoma Hills, 2019
acrylic on giclée on canvas
 16 x 41 image & shadow frame
 \$3,000



**#39 Carneros Vineyards with
 Mount Diablo, 2001**
oil on canvas over panel
 15.5 x 46 image & frame
 \$3,000



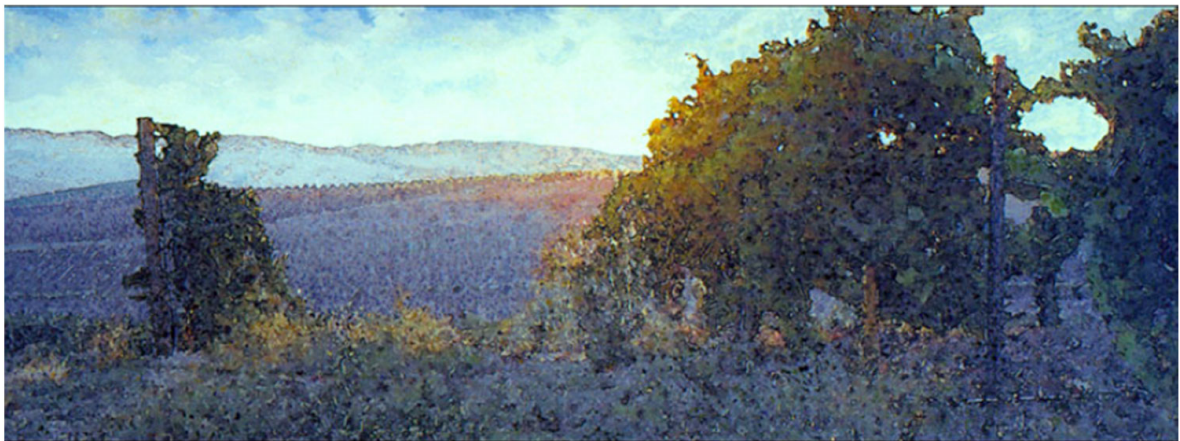
**#40 Carneros Vineyards with
Mount Tamalpais, 2004**

giclée print

15 x 32 image

18 x 34.5 sheet

\$350



#41 Carneros Vineyards Sunset II, 2002

giclée print

12 x 32 image

16.5 x 35 sheet

\$350



**#42 Carneros Wetlands with
Mount Tamalpais, 2002**
giclée print
19.5 x 32 image
24 x 34.5 sheet
\$450



**#43 Mt. Diablo as viewed from the top
of Sonoma Mountain, 2021**
acrylic on giclée print
7 x 14.5 image
12 x 18 mat and frame
\$500



#44 Carneros Vineyard with Mt.Diablo, 2002

giclée print
 24 x 32 image
 28.5 x 35 sheet
 \$400



#45 Carneros Vineyard with Windmill, 2002

giclée print
 24 x 32 image
 27 x 35 sheet
 \$400



#46 Jack London's Meadow, 1993

giclée print

20 x 33 image

26.5 x 39 mat and print mounted to foam core backing

\$400



#47 Jack London's Meadow, 2018

acrylic on unique print

9.5 x 15.5 image

15.5 x 22 double mat and frame

\$400



#48 Sonoma Mist, 2004
giclée print of original pastel
 13 x 32 image
 16 x 35.5 sheet
 \$400



#49 Sonoma Mountain, 1988
*hand drawn pencil and ink on matte acetate
 with adjustable light panel and transformer*
 17 x 53 image
 20 x 55 frame
 \$6,000

The negative drawing was used to contact print a positive image onto photographic mural paper. Only six prints were made and most were then hand colored. None are now available.



#50 Old Vines, 2016

giclée print

20 x 27 image

27 x 33 double mat and frame

\$450



#51 Old Vines, 2016

giclée print

14 x 19 image

17 x 21 sheet

\$250



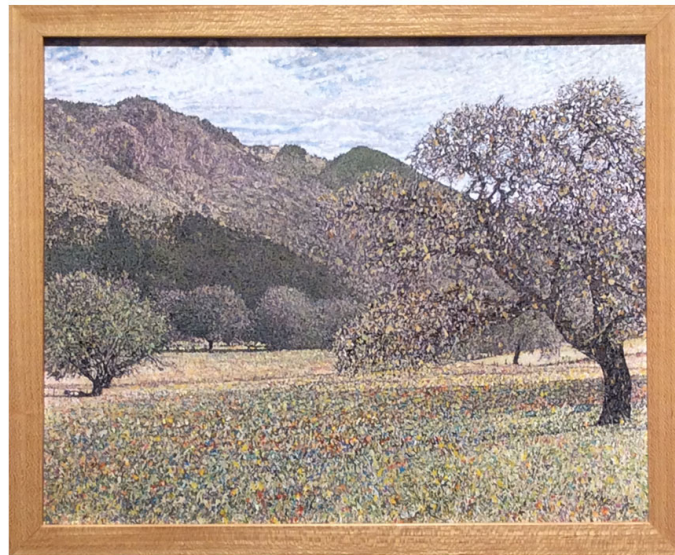
#52 South Sonoma Valley, 1989
pastel on unique print of pencil drawing
 12 x 19.5 image
 21 x 28 double mat and frame
 \$450



#53 Sonoma Vineyards, 1998
pastel on unique print of pencil drawing
 16 x 10 image
 28 x 21 double mat and frame
 \$450



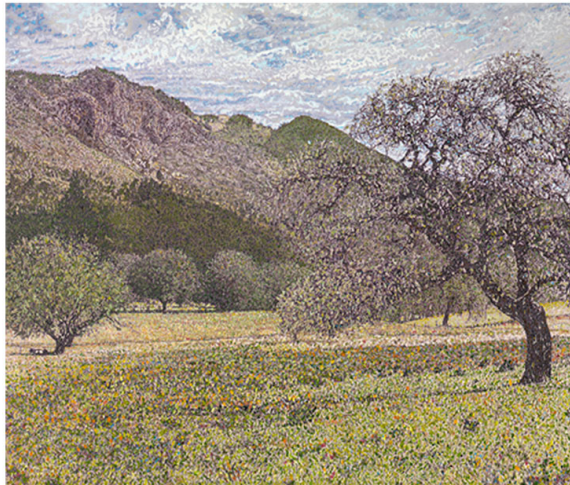
#54 Haywood Vineyard, 2020
acrylic on unique print on canvas
 10 x 13.5 image
 11.5 x 15 frame
 \$300



#55 Hood Mountain, 2020
acrylic on unique print on canvas
 10 x 12.5 image
 11.5 x 14 frame
 \$300



#56 Sonoma Valley, 2002
pastel on giclée print
 17 x 20 image
 26 x 30 double mat and frame
 \$450



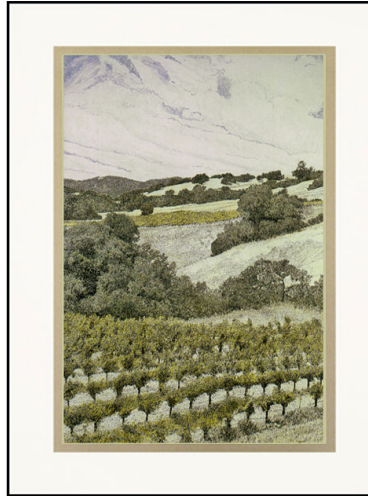
#57 Hood Mountain, 2017
acrylic on masonite panel
 floats two inches off wall without frame
 22 x 26 image and panel
 \$900



#58 Sonoma Hills, 2018
acrylic on b/w cliché-verre
 6 x 16 image
 15.5 x 25 mat and frame
 \$450



#59 Carneros Vineyards, 2018
(looking toward San Francisco)
acrylic on unique print
 8 x 18 image
 15 x 25 triple mat & frame
 \$600



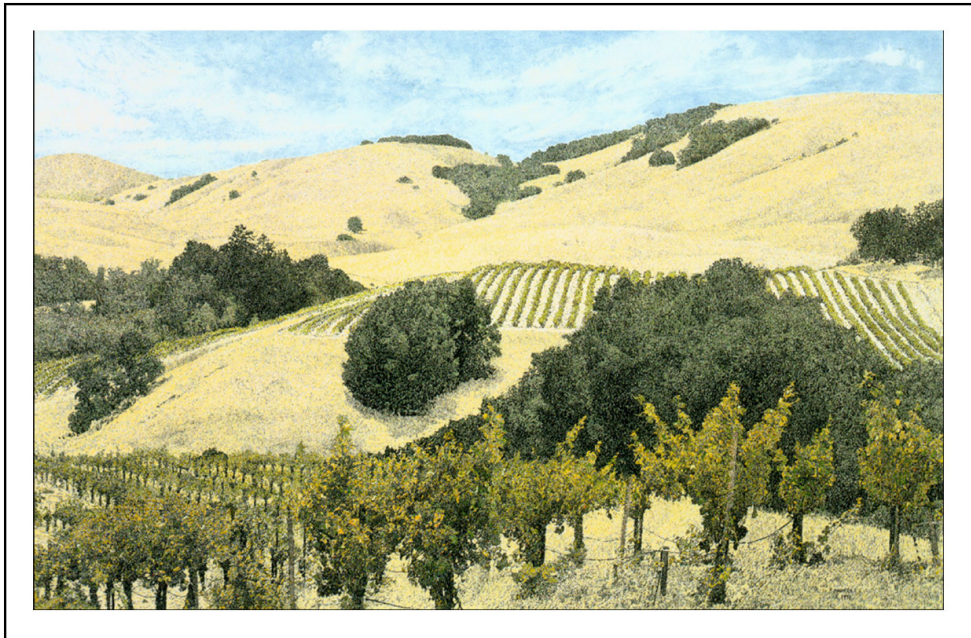
#60 Sonoma Vineyards, 1989

ink print on paper

20 x 13 image

24 x 18 sheet

\$20



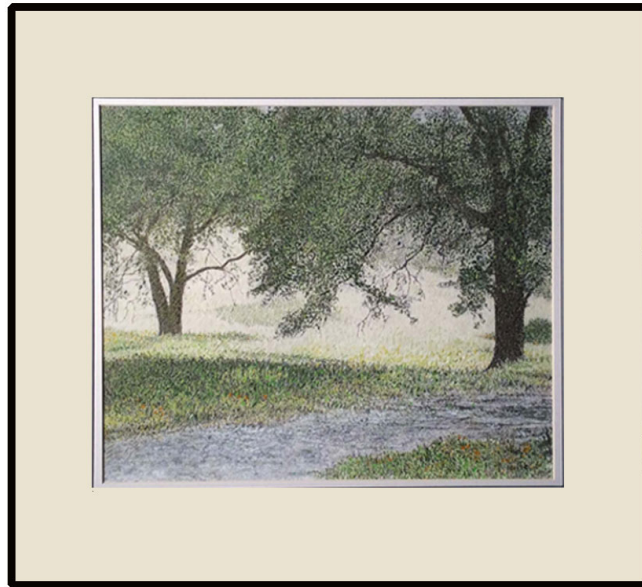
#61 Sonoma County Vineyards 1993

ink print on paper

21 x 32 image

24 x 36 sheet

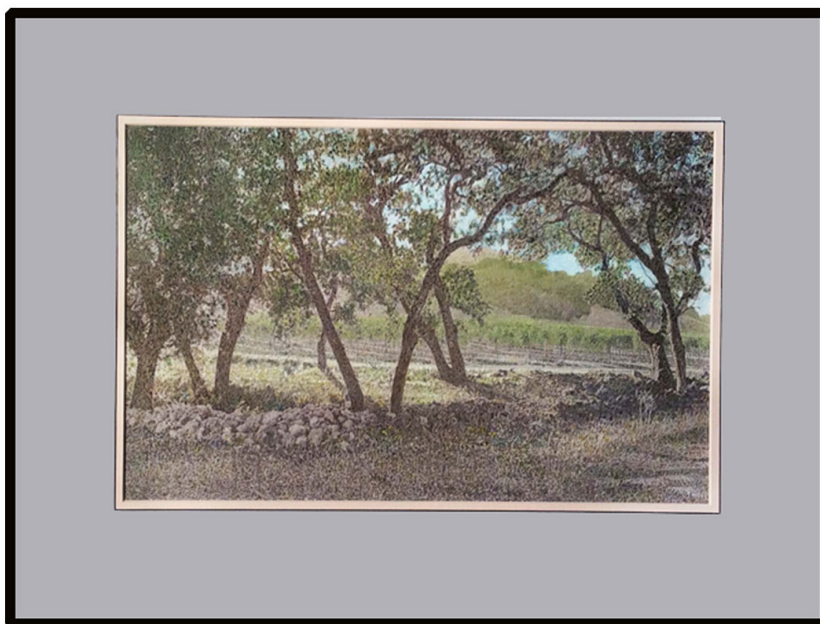
\$25



#62 Ukiah, 2007
acrylic on unique giclée
11 x 13 image
16 x 18 double mat and frame
\$500



#63 Maxwell Farms, 2007
acrylic on unique giclée
11 x 13 image
16 x 18 double mat and frame
\$500



#64 Stag's Leap, 2007
acrylic on unique giclée
 10 x 15 image
 16 x 21 double mat and frame
 \$500



#65 Sugarloaf Vineyard, 2011
acrylic on unique giclée
 7.5 x 9 image
 13 x 14.5 double mat and frame
 \$200



#66 Sugarloaf Vineyard, 2007
pastel on unique giclée prints
 23 x 30 each image
 24.5 x 31.5 each frame
 set of two \$2,000



#67 Sugarloaf Vineyard, 2007
acrylic ink on unique giclée print
 11.5 x 15 image
 18.5 x 23 double mat & frame
 \$500



#68 Stag's Leap Winery, 2019
acrylic on unique print
 7 x 13.5 image
 13 x 19 double mat and frame
 \$400



#69 Sonoma Vineyards, 2007
acrylic on unique giclée
 4 x 17 image
 11 x 25 double mat and frame
 \$400



#70 Morning Fog in the Carneros, 2017
acrylic on unique print
 7.5 x 10 image
 14.5 x 17 double mat and frame
 \$400



#71 Stag's Leap Winery, 2017
acrylic on unique print
 9.5 x 12 image
 18 x 20 double mat and frame
 \$650



#72



#73



#74



#75

Autumn Vineyards, 1998
acrylic ink on unique prints
8 x 10 each image
17 x 18 each mat and frame
\$300 each or \$1,000 for set of four



#76 Carneros Sunset, 2018

pastel on unique print

7 x 9.5 image

14 x 16 double mat and frame

\$400



#77 Vineyard Shadows, 2018

acrylic on unique print

7 x 10 image

14.5 x 17 double mat and frame

\$400



#78 and #79 Deerfield Forest, 2007

pastel on unique giclée prints

21.5 x 25 each image

25 x 29 each double mat and frame

\$600 each

set of two \$1,000



#80 Autumn Vineyards, 2007

pastel on unique giclée print

17.5 x 51.5 image

26 x 60 double mat and frame

\$900



#81 Autumn Vineyards, 2007
pastel on unique giclée prints
24 x 32 each image and frame
\$3,000 set of three



#82



#83



#84

Autumn Vineyards, 2007
acrylic on unique giclée prints
12.5 x 16.5 each image
20 x 24 double mat and frame
\$600 each or \$1,000 set of three



#85 Deerfield Forest, I & II, 2007

acrylic ink on unique giclée prints

12 x 14 each image

19 x 21 each double mat and frame

set of two \$500



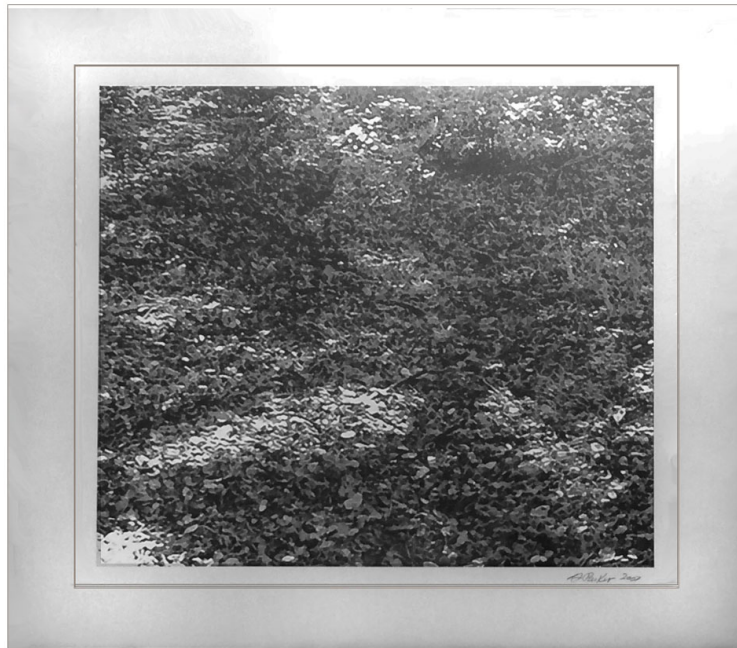
#86 Red Vines, I, II & III, 2015

ink & pastel on unique giclée prints

18 x 12 each image

20 x 21 each frame

set of three \$700



#87 & #88 Deerfield Forest, 2007
unique giclée prints
13 x 14 images
16 x 18 sheets mounted to foamcore
\$40 each



#89 & 90 Vineyard Study I & II, 2007
pastel on unique giclée prints
11.5 x 15 each image
19 x 22 each double mat & frame
\$400 each



#91 & 92 Vineyard Study III & IV, 2007
pastel on unique giclée prints
11.5 x 15 each image
19 x 22 each double mat & frame
\$400 each



Maxwell Farm, 1988

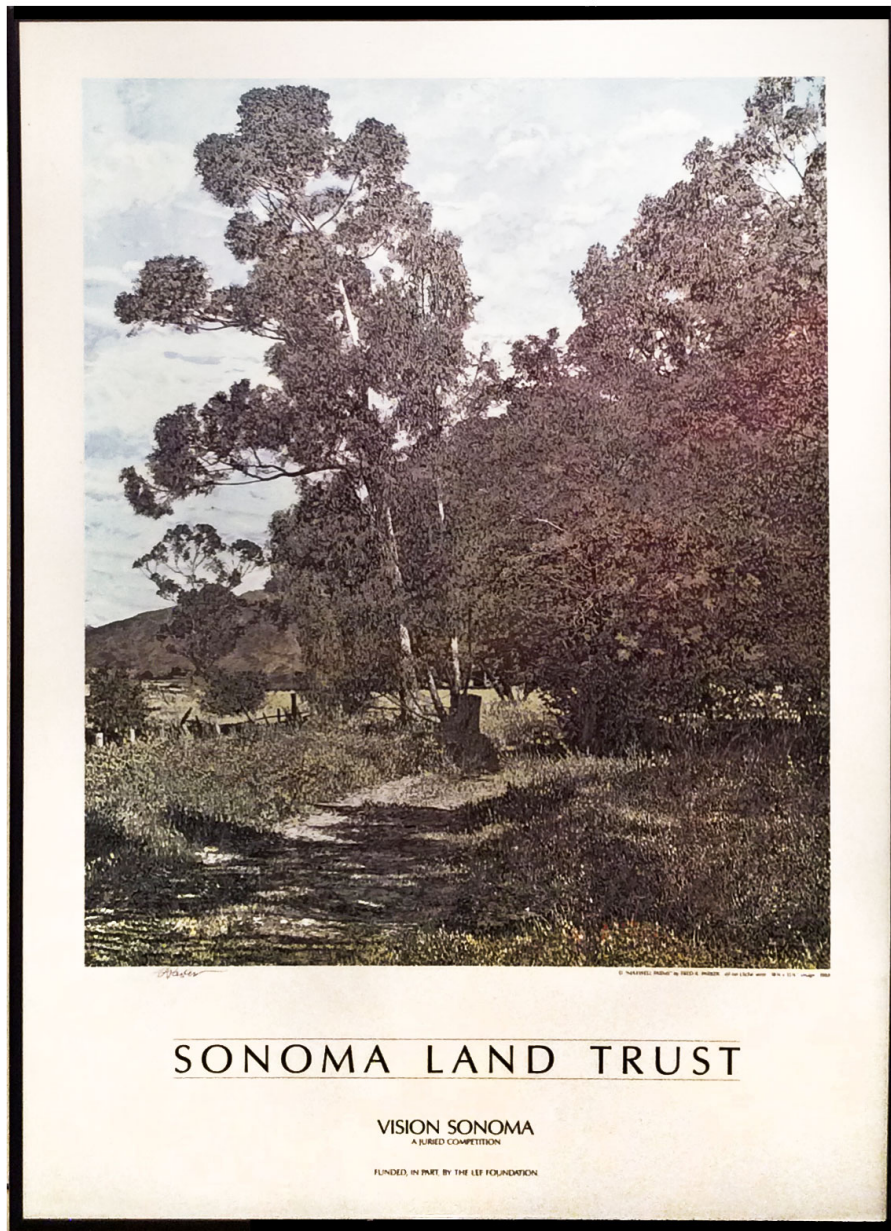
#93 pencil and ink on matte acetate

#94 b/w cliché-verre with oil paint

19 x 15.25 image

26 x 23 double mat and frame

\$900 each



#95 Maxwell Farms Poster, 1990

signed Sonoma Land Trust Poster

19 x 15 image

25.5 x 18 sheet

\$25 sheet only

\$100 sheet with metal frame



#96 Maxwell Farms, 2019

giclée print

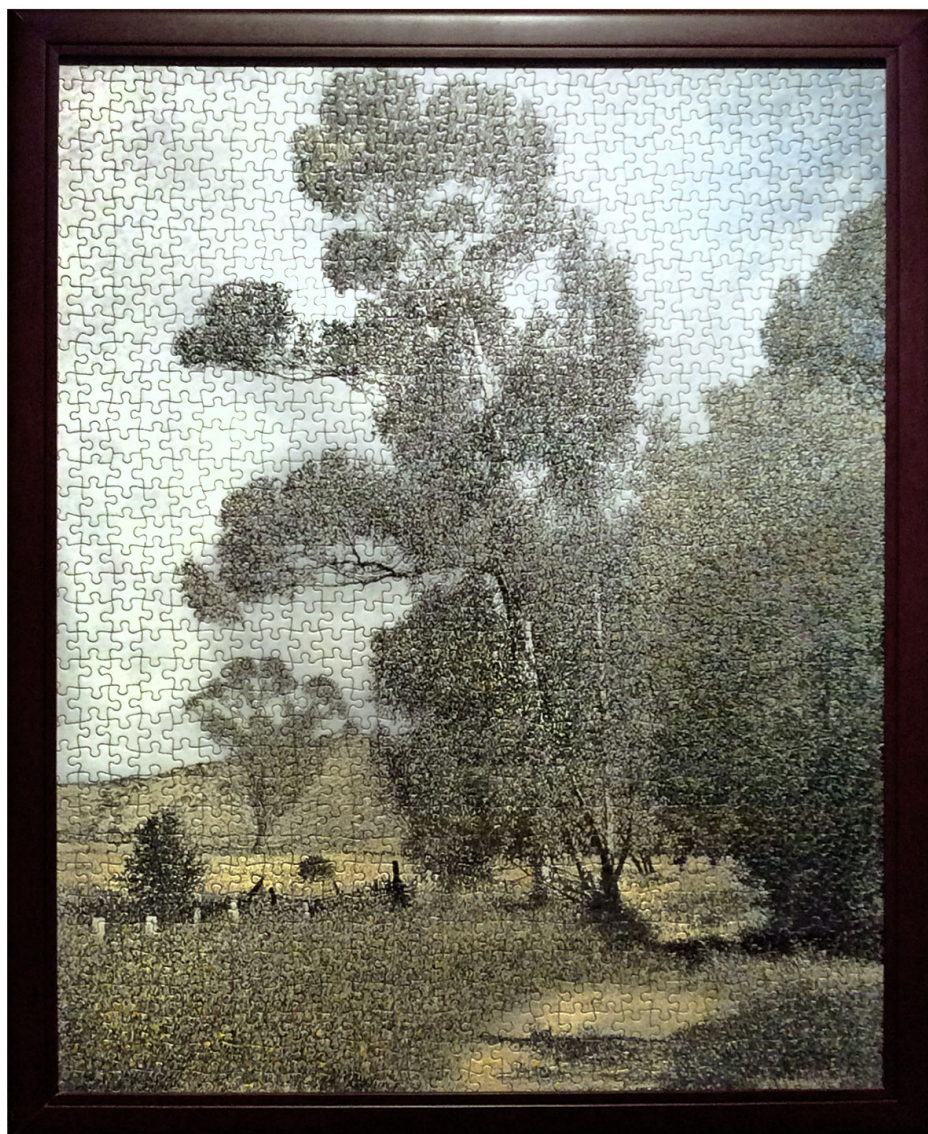
26 x 20 image

29 x 23 sheet

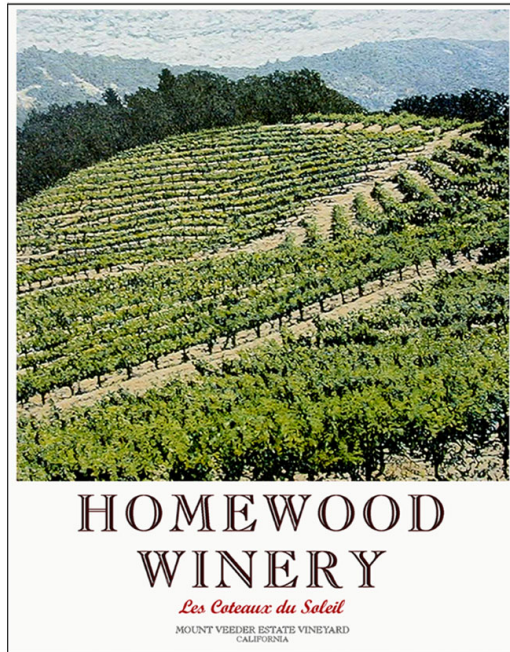
\$500

35 x 29 double mat and frame

\$700



#97 Maxwell Farms, 2020
assembled and mounted
1008 piece picture puzzle
26 x 20 image
28.5 x 22.5 frame
\$450
unassembled boxed puzzle
can be orderd
\$60

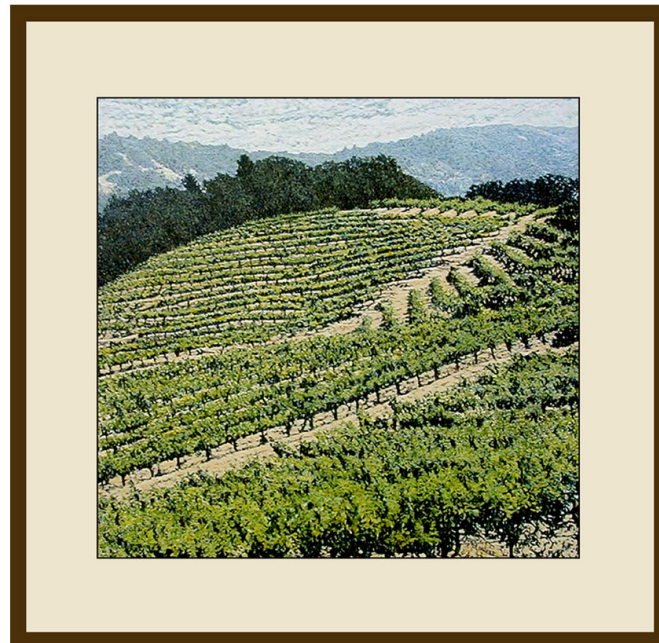


#98 Homewood Poster, 1999

24 x 18 sheet

16 x 17 image

\$20 less than five available



#99 Homewood Poster (trimmed), 1999

16 x 17 image

24 x 23.5 mat and wood frame

\$175



#100 Midwest Backyard, 1985

pencil drawing on paper

17 x 22 image

26 x 32 mat and frame

\$650



#101 Midwest Backyard, 1985

ink on matte acetate

*(hand drawn negative used to make
a positive image on photographic paper)*

17 x 22 image

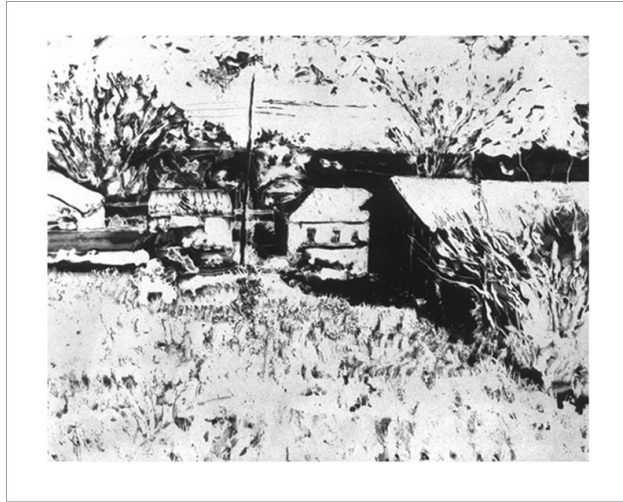
\$300



#102 Midwest Backyard, 1985
b/w cliché-verre print
 17 x 22 image
 34 x 37 mat and frame
 \$600



#103 Midwest Backyard, 1985
half plate b/w cliché-verre print
 17 x 14 image
 25 x 22 mat no frame
 \$400



#104 Midwest Backyard, 1985

b/w cliché-verre

*(contact print from negative
ink drawing on glass)*

16 x 20 image

20 x 24 mounted to foamcore

\$200



#105 Midwest Backyard, 1985

b/w cliché-verre

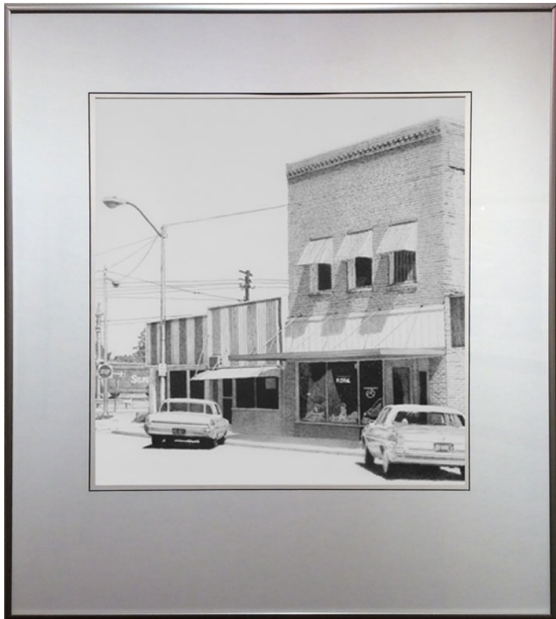
*(contact print from negative
ink drawing on glass)*

20 x 24 image and sheet

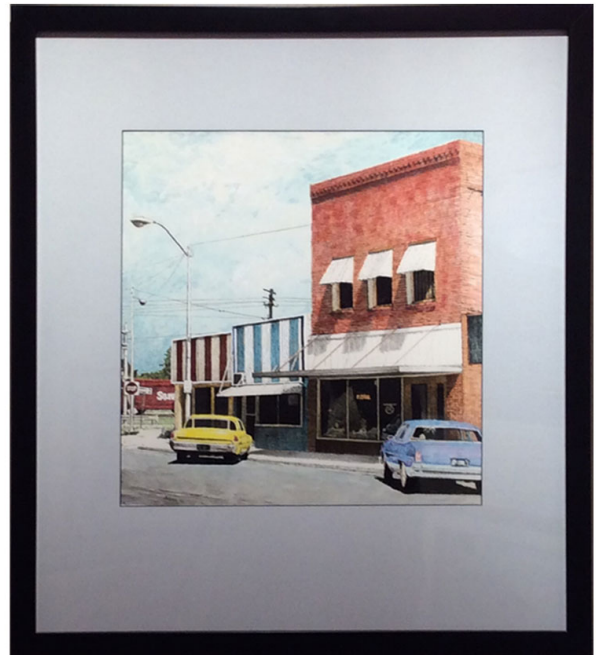
\$200



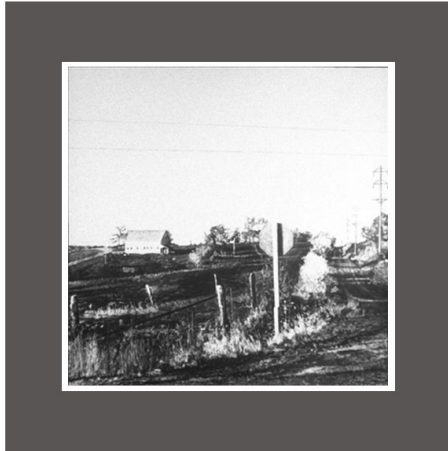
#106 Kansas Sign, 1983
b/w cliché-verre print
 15 x 15 image
 20 x 16 sheet
 \$500



#107 Kinsley, Kansas, 1983
pencil on matte acetate
 15 x 15 image
 26 x 23 mat and frame
 \$600



#108 Kinsley, Kansas, 2011
oil on b/w cliché-verre
 15 x 15 image
 26 x 23 mat and frame
 \$900



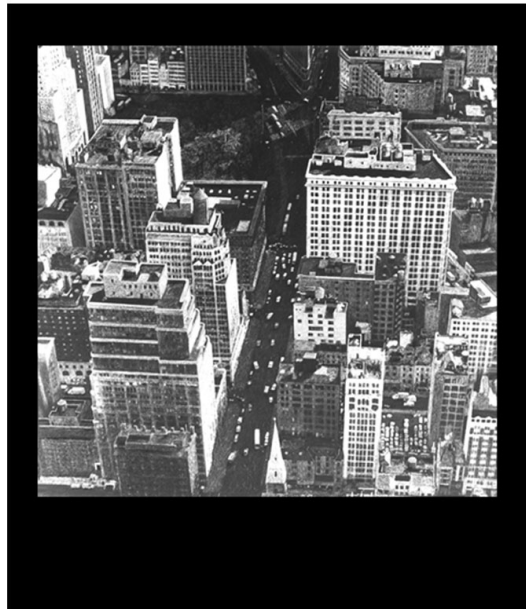
#109 Near Savannah, Missouri, 1984

b/w cliché-verre print

9 x 9 image

15 x 14 double mat and no frame

\$50



#110 Flat Iron Building, NYC. 1983

b/w cliché-verre print

15 x 15 image

20 x 16 sheet

\$500

23 x 20 mat and metal frame

\$600



#111 Figment, 1984 - 88
 (after Timothy O'Sullivan)
 color pencil on b/w cliché-verre
 20 x 16 image and sheet
 30 x 27 mat and wood frame
 \$800



#112 Arizona, 1984
 (after Timothy O'Sullivan)
 b/w cliché-verre print
 15 x 15 image
 20 x 16 sheet
 \$500



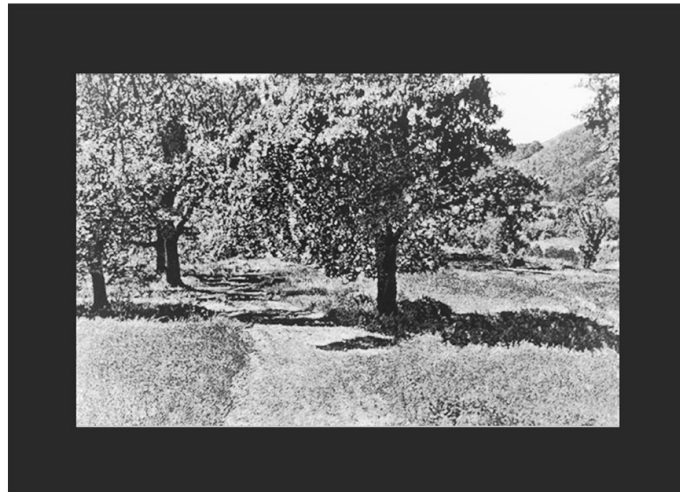
#113 Sugarloaf Path, 1990

b/w cliché-verre

9 x 14 image

17 x 21 mat and frame

\$450



#114 Sugarloaf Path, 1990

b/w cliché-verre

9 x 14 image

16 x 20 sheet

\$300



#115 Hay Bales, 1990
acrylic on b/w cliché-verre
 9 x 14 image
 18 x 22 mat and frame
 \$450



#116 Hay Bales, 1990
b/w cliché-verre
 9 x 14 image
 16 x 20 sheet
 \$300



#117 Sonoma Hills, 1990
acrylic on b/w cliché-verre
 9 x 14 image
 17 x 21 mat and frame
 \$450



#118 Sonoma Hills, 1990
b/w cliché-verre
 9 x 14 image
 16 x 20 sheet and mat
 \$300



#119 Spring Lake, 1990
acrylic on b/w cliché-verre
 9 x 14 image
 17 x 21 mat and frame
 \$450



#120 Sonoma Mountain, 1990
b/w cliché-verre
 9 x 14 image
 16 x 20 sheet
 \$300



#121 South Sonoma Valley, 1990

acrylic on b/w cliché-verre

9 x 14 image

17 x 21 mat and frame

\$450

unpainted 16 x 20 b/w sheet only \$300



#122 Maxwell Farms Tree, 1990

b/w cliché-verre

9 x 14 image

16 x 20 sheet

\$300



#123 Stage Coach Gulch, 1990

b/w cliché-verre

9 x 14 image

16 x 20 sheet

\$300

17 x 21 mat and frame

\$400



#124 Sonoma County Vineyards, 1990

b/w cliché-verre

9 x 14 image

16 x 20 sheet

\$300



#125



#126



#127

Main Street, Savannah, Missouri, 1983

#125 negative pencil drawing on matte acetate

#126 b/w cliché-verre print

#127 acrylic on b/w cliché-verre print

15 x 15 images

26.5 x 23.5 mats and wood frames

\$1,000 each

if available: set of three \$2,000



#128



#129



#130

Homecoming, Savannah, Missouri, 1983

#128 negative pencil drawing on matte acetate

#129 b/w cliché-verre print

#130 acrylic on b/w cliché-verre print

14.5 x 14.5 images

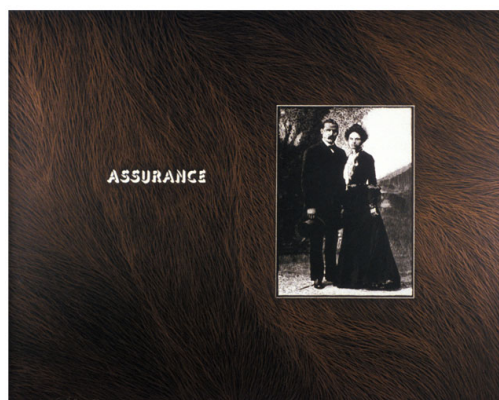
25 x 22 mats and metal frames

\$1,000 each

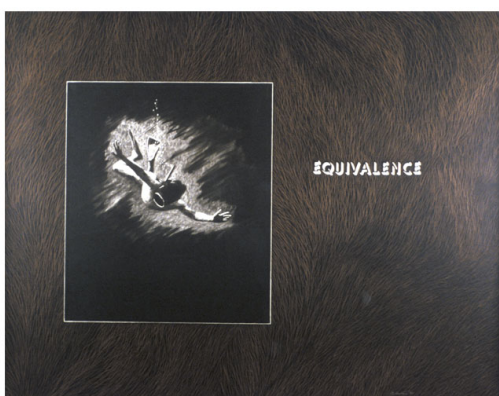
if available: set of three \$2,000



#131



#132



#133



#134



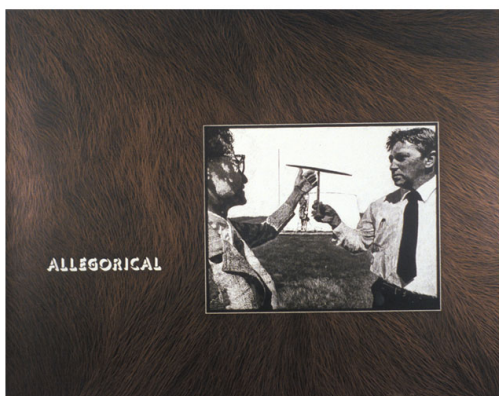
#135

Individual sheets

\$350 each

if available

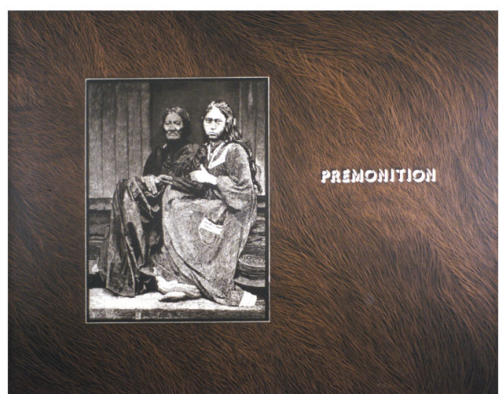
#131 - #140 Connotations Portfolio, 1985
ten b/w cliché-verre prints with copper pencil
16 x 20 each sheet
Archival clamshell box 17 x 21.5 x 2
\$3,000



#136



#137



#138



#139

Individual sheets

\$350 each

if available



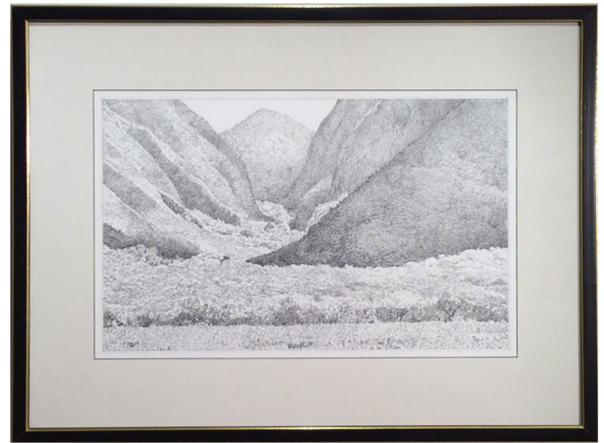
#140

#131 - #140 Connotations Portfolio, 1985
ten b/w cliché-verre prints with copper pencil
16 x 20 each sheet
Archival clamshell box 17 x 21.5 x 2
\$3,000



#141 Maui, 1998

*pencil on paper
12 x 20 image
21 x 28 mat and frame
\$450*



#142 Maui, 1998

*pencil on paper
12 x 20 image
21 x 28 mat and frame
\$450*



#143 Maui, 1998

*pencil on paper
12 x 20 image
21 x 28 mat and frame
\$450*



#144 Maui, 2004

*pastel on B/W print
12 x 20 image
21 x 28 mat and frame
\$550*



#145 *Untitled Still Life*, 1985

oil on canvas over panel

29 x 33 frame

\$1,500



#146 *Flowers*, 1985

pastel on paper

16.5 x 16.5 image

26 x 23 mat with pastel and frame

\$400



#147 Tools, 1987
pastel on paper
 20 x 27 image
 31 x 37 mat and frame
 \$750



#148 Study for oil painting, 1985
color pencil on paper
 10 x 12 image
 17 x 19 double mat and frame
 \$400



#149 Untitled, 1979
*(based on a photograph
 by Alfred Stieglitz)*
pastel on paper
16 x 12.5 image
24 x 19 mat and frame
\$400



#150 Self Portrait, 1965
monoprint ink transfer on paper
10.5 x 16.5 image
18 x 25 double mat and frame
\$300



#151 Untitled, 1987
 (after George Inness)
 oil on paper
 13.5 x 13.5 image
 20 x 20 mat and metal frame
 \$250



#152 Looking West, 1985
 pencil drawing on paper
 21.5 x 33 image
 31 x 41 mat and frame
 \$500



#153 Maui, 2020
acrylic on canvas
10 x 13 image
11.5 x 14.5 frame
\$300



#154 Sonoma Hills, 2021
acrylic on canvas
mounted to foamcore
11 x 14.75 image
with metal frame
\$300